

Overview

A high performance wireless system for transmitting count data to a receiver attached to the LAN or directly to a PC is available for the majority of Chambers indoor counters.

The wireless system is recommended in situations where data can be obtained remotely on a PC without the need for downloading the loggers at the counter.

The system consists of:

- one or more wireless-enabled counters which are attached to a radio transmitter.
- one receiver which is attached to the LAN or directly to the PC with the supplied USB lead.
- one or more repeaters can be supplied which increases the distance between the counters and the receiver.

The maximum distance between the transmitter and receiver is 100 metres (line of sight) or 30 metre intervals depending on the wall construction. Repeaters can be supplied when the distance between the counter and the receiver is too great.

More than one repeater can be used and repeaters can forward data from multiple counters. The repeaters are mains-operated.

The transmitters send data continuously to the PC running the software where current count data is displayed during the current time interval. The software allows the data to be downloaded at any time the operator requires. The counts are displayed graphically, and as a table, showing the time/date stamp on the counts for each interval. The PC must be on continually to log the data.

If a LAN connection is used then any PC on the network can run the program that receives the count data.

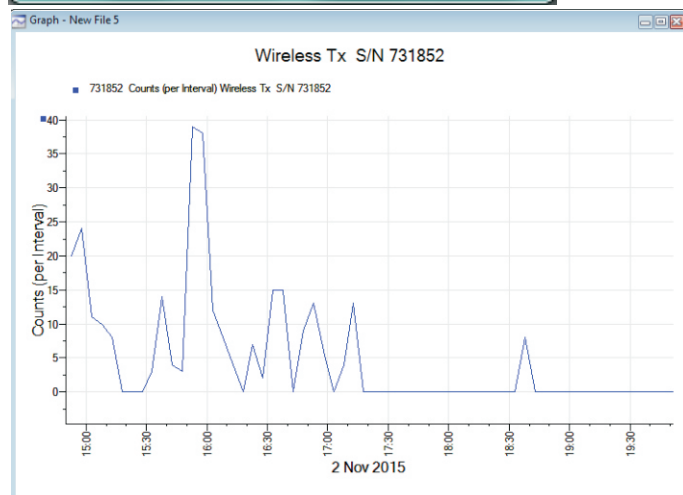
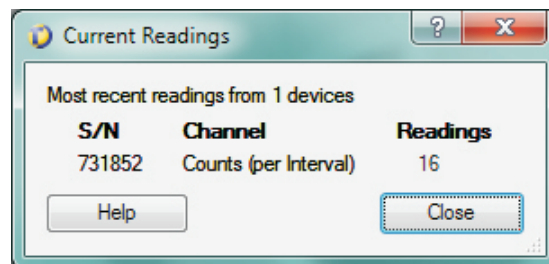
Counter software

The supplied software can display the real-time data in a current reading window which shows the number of counts in the current time interval (see right).

There is also the option to "Get Data from Logger", which generates a graphical view showing all data held in the logger up to the last time interval (see graph at right). This graph can be converted to a table of counts against time/date which can be exported to Excel or other management systems.

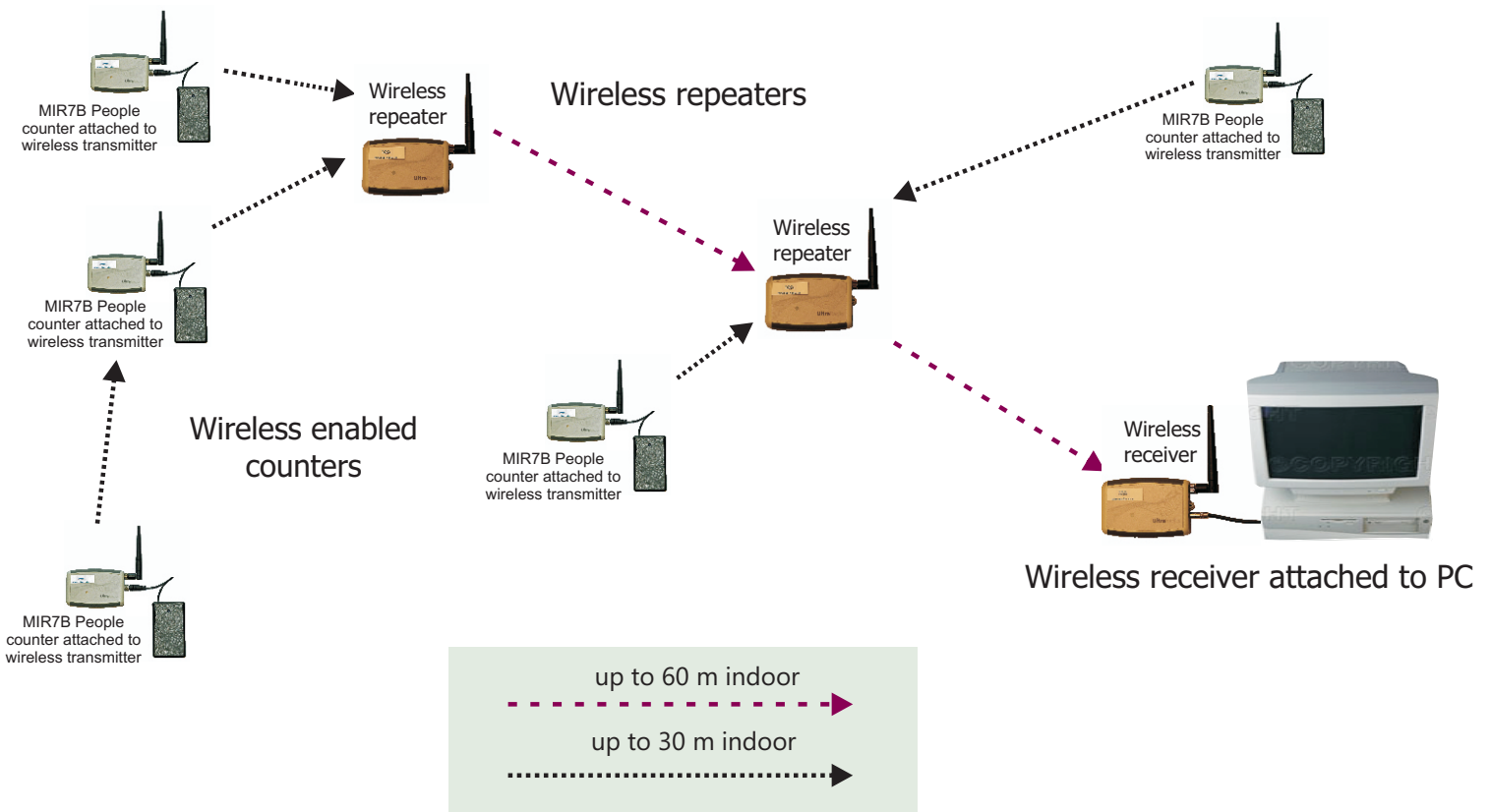
The standard output can be customised to show the counts from multiple counters, display bar graphs, etc. The system will also record the temperature and humidity at the receiver.

We will discuss your specific requirements and advise on the optimum solution.



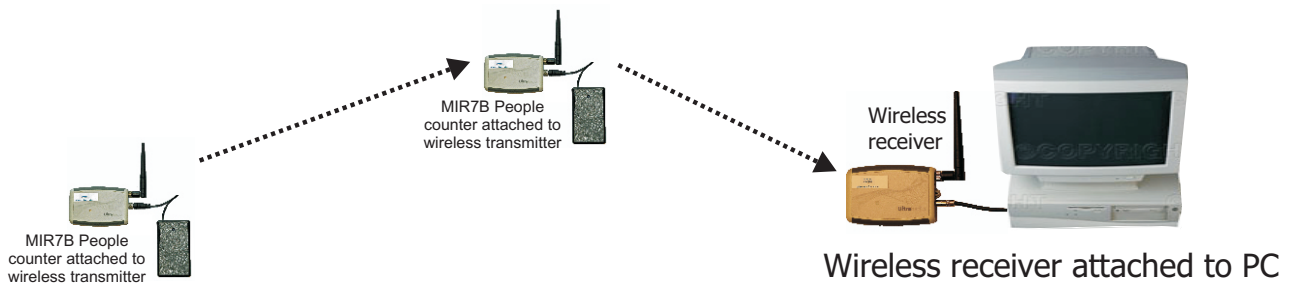
Example 1

**Wireless counting system including:
5 wireless enabled counters, 2 repeaters and a receiver attached to PC.**



Example 2

**Wireless counting system including:
2 wireless enabled counters and a receiver attached to PC.**



(Not to scale)